

ACTIVESHOP®

INSTRUCTIONS FOR USE

Elegante platinum T6 body slimming system device



Importer:

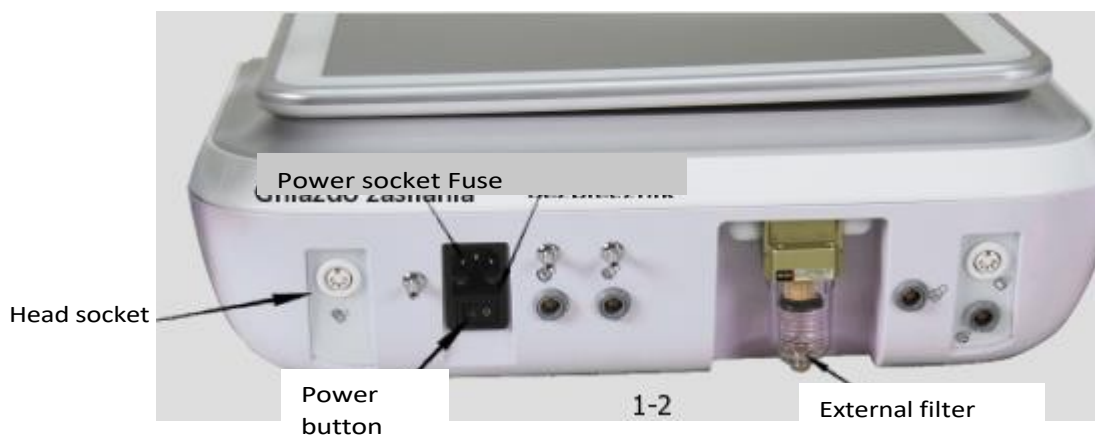
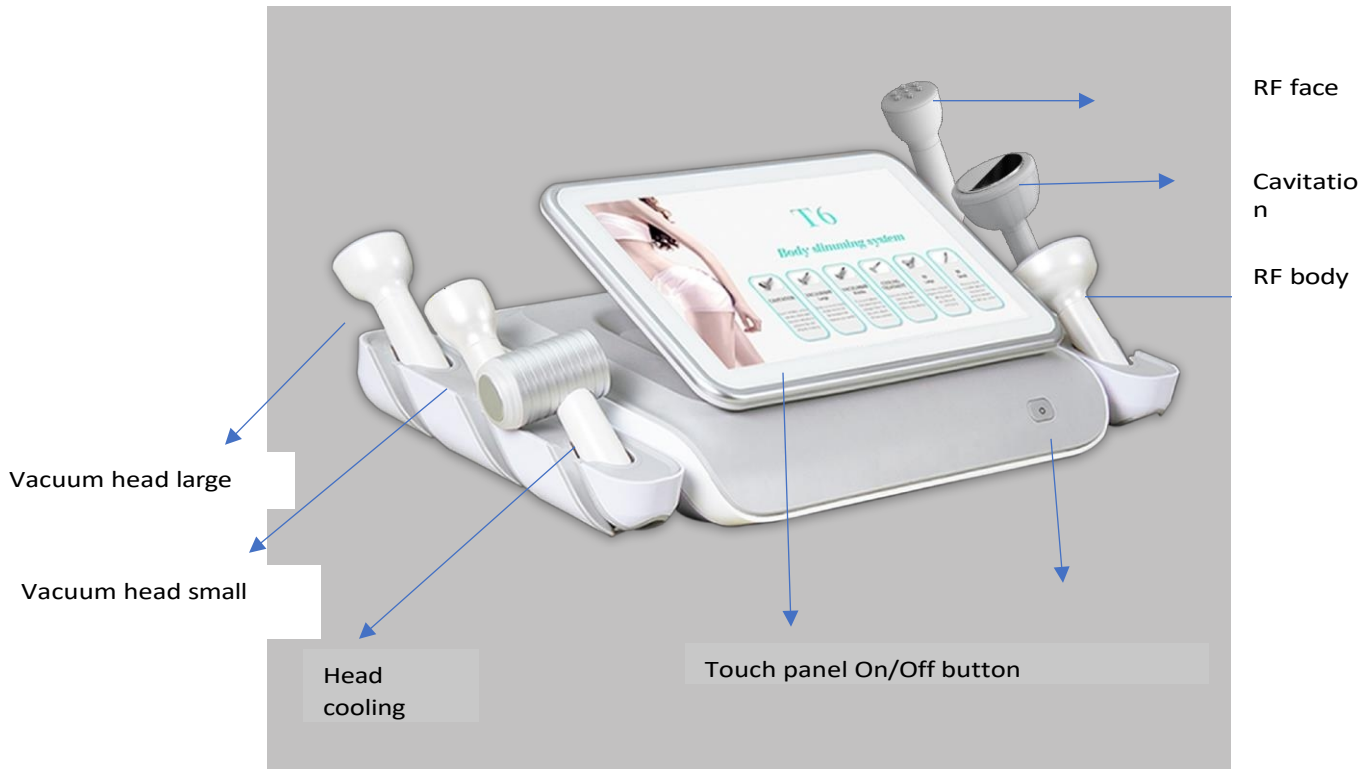
ACTIVESHOP Ltd.
Ul. Graniczna 8b, building
DC2A 54-610 Wrocław,
Poland

www.activeshop.com.pl

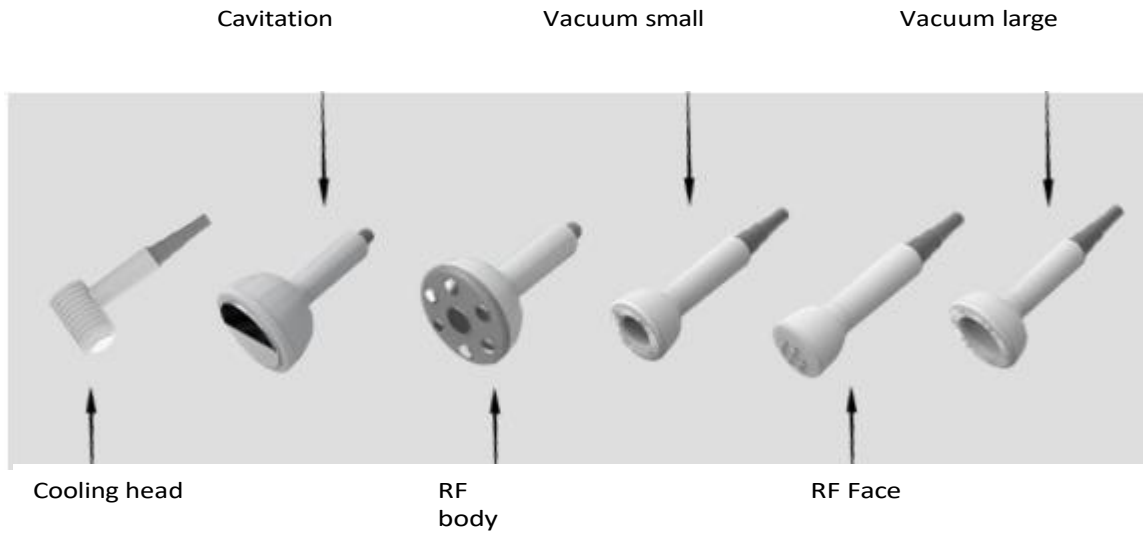
Rev. A/09/2024



Construction of the device

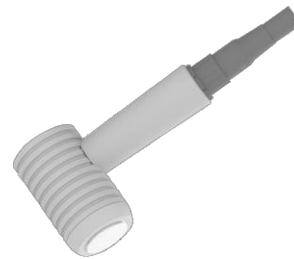


Heads



Connecting heads

1. Cooling head



2. Vacuum head large



3. Vacuum head small



4. Cavitation



5. RF body



6. RF face



Technical data

Voltage	220-240V
Power	95W
Current intensity	2A
Gross weight	15kg

Dimensions



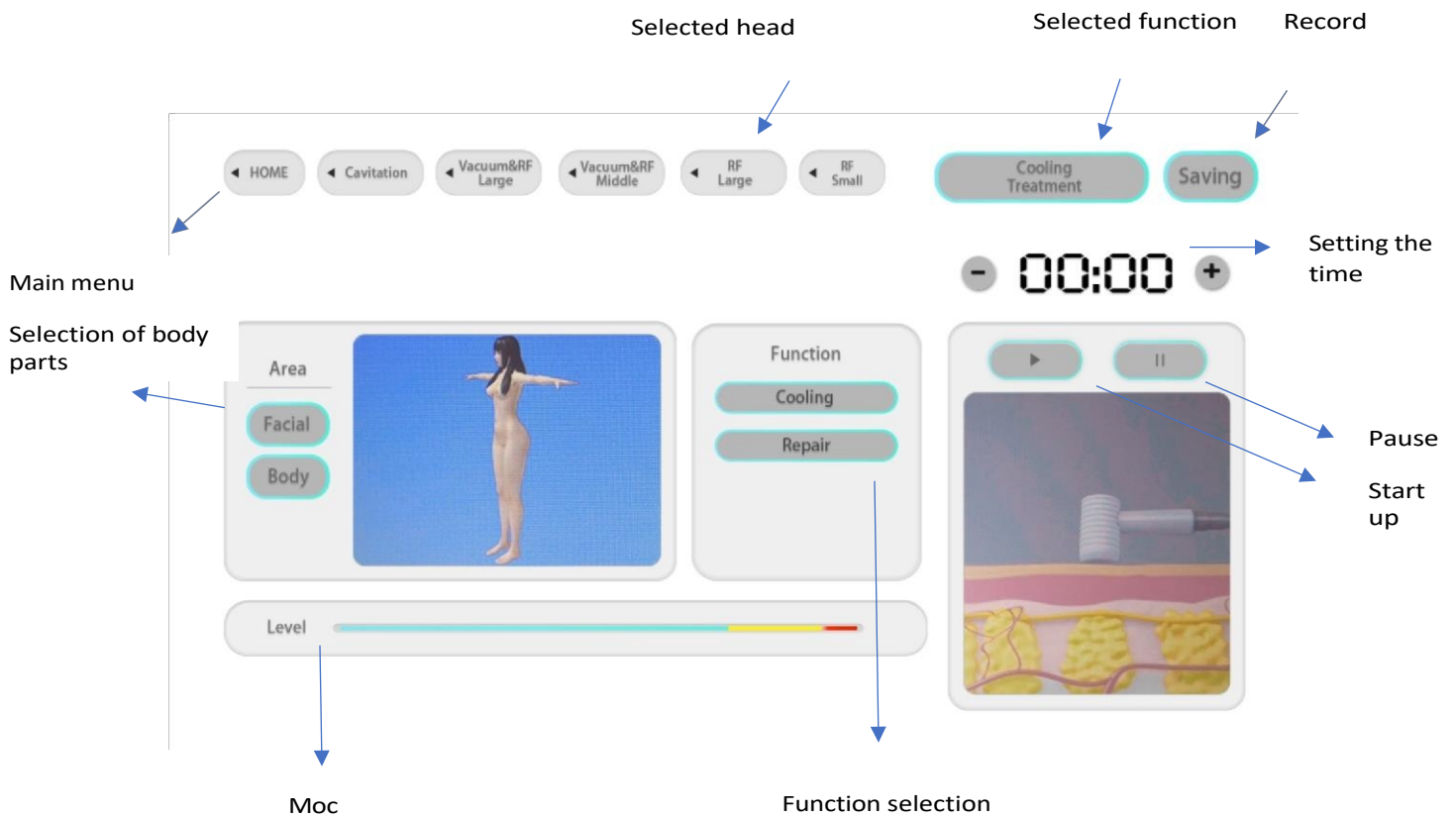
Instructions for use:

1. Connect the heads to the device, and then plug the device into the power supply.
2. Turn on the device with the O/I button on the back and press the switch on the front.
3. The following menu will be displayed.

4. Press on the icon of the corresponding head.



5. The following menu will be displayed



6. Select the appropriate head, body part, function, power and treatment time and then press the Start button. Power and treatment time should be adjusted individually according to the client's needs.
7. If you want to save the given settings for a specific body part, press Saving and then Yes.
8. Move the head over the selected body part.

Attention!

To avoid injury, do not hold the head too long in one place, and move it around the body.

Recommended duration of treatments:

1. **Cavitation** - reduces fatty tissue, has a slimming and firming effect on the skin
 - Hands 10-15 minutes,
 - Talia 15-20 minutes,
 - Legs 10-15 minutes,
2. **Vacuum & RF** (use special gel for RF treatments) - firms skin, stimulates collagen fibers to regenerate
 - Talia 15-20 minutes,
 - Legs 10-15 minutes,
 - Back 10-15 minutes,
 - Arms 10-15 minutes,
3. **Cooling head** - shrinks blood vessels, reduce skin redness
 - Face 10-15 minutes,
4. **RF large** (use a special gel for RF treatments) - reduce wrinkles, improve blood circulation, stimulate collagen fibers to regenerate
 - Talia 15-20 minutes,
 - Legs 10-15 minutes,
 - Arms 10-15 minutes,
5. **RF small** (use a special gel for RF treatments) - reduce wrinkles, improve blood circulation, stimulate collagen fibers to regenerate
 - Face 15-20 minutes,
 - Shoulders 10-15 minutes.

Maintenance of the device

1. Keep the device clean. If necessary, wipe with a soft, damp cloth.
2. Heads should be disinfected before and after treatment. Too high a concentration of disinfectant can cause damage to the heads.
3. Do not operate the touch panel with styluses or other objects that can damage the surface.
4. The device cools down for about 15 minutes after switching off. Allow the components to cool down.

Contraindications to the procedure:

1. Pacemaker or implanted defibrillator.
2. Skin cancer or pre-cancerous stages.
3. Metal implants in the body.
4. Hypertension, diabetes and heart disease.
5. Pregnancy and breastfeeding.

6. Open wounds or infections.
7. Healing body parts

Solving basic problems

Problem	Method of solution
The device does not turn on	Check the correct connection to the power supply Check that the buttons are on
The head does not work	Check that the head is properly connected
The device has overheated	Stop work and let the device cool down
No power supply	Check the fuse

SECURITY MEASURES

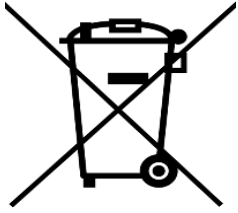
1. The device is a professional equipment for use in cosmetic surgeries. Operation of the device only by qualified medical personnel avoids undesirable consequences during the procedure.
2. Do not disassemble the device or attempt to use it for purposes other than those indicated in this manual. All servicing and repairs must be performed only by an authorized service technician (ACTIVESHOP Ltd. company).
3. Do not install or operate the device near liquids, wet areas or with wet hands - so that no liquids get into the device.
4. Immediately remove the plug from the outlet and contact the authorized service provided by ACTIVESHOP Ltd. in the following cases:
 - a) Liquid has entered the device,
 - b) the device emits a strange odor, smoke or makes strange sounds,
 - c) the power cord has been damaged,
 - d) the device has been overturned or its housing has been damaged.
5. Do not put any objects on the cables. Do not install the unit where someone may step on the power cord.
6. For safety purposes, unplug the cable from the outlet each time you finish working with the device.
7. Do not insert anything into the opening of the device. If a foreign object enters the hole, remove the cord from the outlet and contact the distributor or manufacturer.
8. Do not place the device on an unstable cart, shelf or vehicle. If dropped, the device may be damaged.
9. In order to guarantee the established useful life of the device, it is recommended to keep an interval of one minute before pressing the power button again (between switching on and off and vice versa).
10. The power supply must comply with the specifications on the nameplate. Otherwise, there is a risk of incorrect operation of the device, damage and even burning.

NOTE

1. In case of damage to the power cord or other malfunctions, contact an authorized service center - this will avoid danger.
2. This equipment may be used by children at least 8 years of age and by persons of diminished physical and mental capabilities and persons with inexperience and lack of familiarity with the equipment, if supervision or instruction on the use of the equipment in a safe manner is provided so that the associated risks are understood.
3. The device is not intended for play by children. Do not allow children to play with the device.

4. Do not leave the device unattended when children or people without sufficient knowledge of how to use the device are around.
5. This electrical appliance is not a toy. Improper use or contact with the electrical device may pose a health risk or lead to death, so keep the device out of the reach of children.

DISPOSAL OF THE DEVICE



Dispose of used electrical appliances, fixtures and packaging to raw material reprocessing centers in accordance with environmental protection principles. Electrical appliances should not be disposed of in household waste containers. Follow the rules for discarding this type of equipment. In order to protect the environment in accordance with

Directive 2012/19/EC on waste electrical and electronic equipment, waste electrical equipment should be collected separately, and then handed over to collection points for waste electronic and electrical equipment. At the end of their useful life, as well as old appliances containing full-value recyclable components, so they should be sent for reprocessing. Therefore, they should be handed over to appropriate collection points, as well as they can be handed over to ACTIVESHOP Ltd.

STORAGE AND TRANSPORT

The device should be transported at a temperature in the range of (-) 20 °C to (+) 50 °C only in its original packaging. Store the device in a well-ventilated place and a relative humidity of no more than 75%. Operating temperature from (+) 10 °C to (+) 40 °C. During the storage and transportation processes, the device must not be thrown or dropped, exposed to mechanical shocks or atmospheric agents.